

NOTICE FOR PARTICIPANTS



There is no proof of transmission between animals and humans.

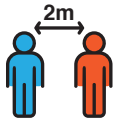


Animals exposed to the virus can become vectors of transmission like any object.



The virus can easily be deactivated with soap or disinfectant.

PHYSICAL DISTANCING



Respect the 2m distancing measures:

- from arrival to departure of the stable grounds
- During breaks and eating periods
- Do not participate in or create gatherings of people.



Follow instructions concerning movement (direction of movement, waiting areas/lines, ground markers, etc.)



Follow directions concerning activities.

HYGIENE MEASURES AND PREVENTION



- Wash your hands frequently for 20 seconds;



- Do not touch your eyes or mouth with your hands;



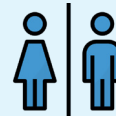
- Sneeze and cough into your elbow;
- Throw away tissues immediately after use;



- Avoid touching animals present on the stable grounds;



- Wearing a face cover is mandatory for people 12 years and over. However, exceptions apply: when these people are involved in equestrian activities (riding or driving), taking part in day camps or are seated in a viewing or rest area and the physical distance of 2 m is respected.
Note that wearing a face cover is strongly recommended but not mandatory for children aged 2 to 12.



- Respect instructions concerning the use of equipment and bathrooms;



- Do not come to the stable if you present symptoms of COVID-19 or if you have been in close contact with a person who is symptomatic or has been placed in isolation due to COVID-19.